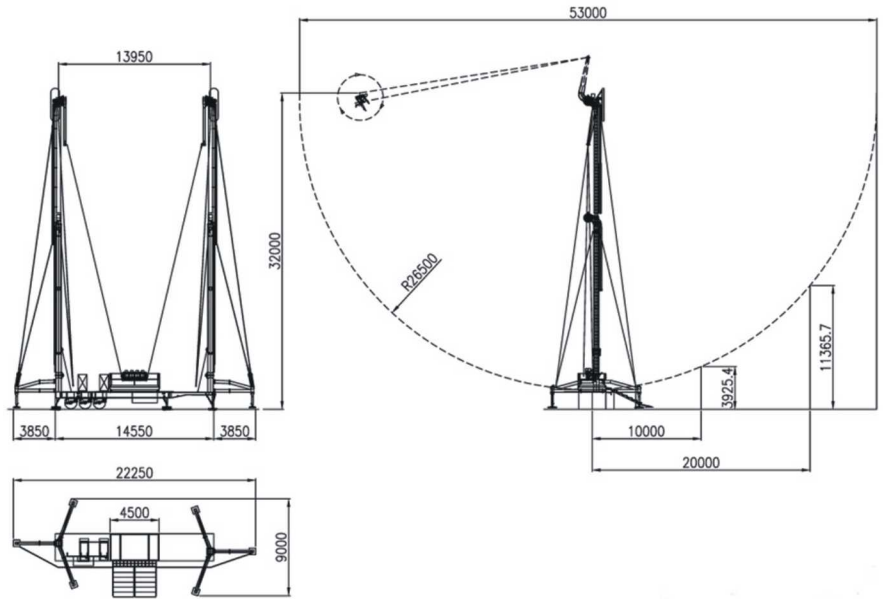


The Maxxx is a new Technical Park extreme ride for 2006, another example of our creativity and high trust in innovation. This ride can't be considered a mere evolution of a classic Ejection Seat because it keeps out new elements of thrill from a different combination of fall and lift accelerations not yet considered in any other attraction and it is suitable both for funfairs and parks..



MAXXX

Park model	Available
Road model	Available
Height:	35 mt (115 ft)
Width:	22,5 mt (74 ft)
Depth:	53 mt (174 ft)
Lanes:	1 car, 4 passengers
Loading:	Simultaneous
Estimated capacity:	100 passengers/hour
Requirement for city line connection:	80 KW
Voltage:	380 V ± 5% 3 Ph. + N (other versions on request)
Frequency:	50/60 Hz ± 2%
Trasport road model:	1 semitrailer 16,2 mt (53 ft)